



Noise Monitoring Result

Day Time (0700 - 1900hrs on normal weekdays)

Location: M1a - Harbour Road Sports Centre

Date	Time	Weather	Measurement Noise Level			Baseline Level	Construction Noise Level	Limit Level
			Leq	L10	L90	Leq	Leq	Leq
Unit: dB(A), (30-min)								
29/4/2014	10:45	Cloudy	73.5	75.0	67.5	72	68	75
7/5/2014	09:11	Fine	72.9	75.0	70.5	72	65	75
14/5/2014	14:15	Cloudy	71.0	73.5	66.0	72	71	75
20/5/2014	11:05	Sunny	72.3	74.5	67.0	72	56	75
26/5/2014	14:28	Fine	70.6	73.0	66.0	72	71	75

Location: M2b - Noon-day gun area

Date	Time	Weather	Measurement Noise Level			Baseline Level	Construction Noise Level	Limit Level
			Leq	L10	L90	Leq	Leq	Leq
Unit: dB(A), (30-min)								
29/4/2014	13:00	Cloudy	73.9	75.0	67.5	68	73	75
7/5/2014	09:58	Fine	70.2	71.5	68.0	68	67	75
12/5/2014	14:10	Fine	72.1	73.7	66.0	68	70	75
20/5/2014	13:00	Cloudy	67.6	69.0	65.0	68	68	75
26/5/2014	13:42	Fine	68.2	69.5	66.0	68	59	75

Location: M3a - Tung Lo Wan Fire Station

Date	Time	Weather	Measurement Noise Level			Baseline Level	Construction Noise Level	Limit Level
			Leq	L10	L90	Leq	Leq	Leq
Unit: dB(A), (30-min)								
29/4/2014	13:45	Cloudy	66.5	68.0	64.5	69	67	75
7/5/2014	10:42	Fine	66.4	68.0	64.0	69	66	75
14/5/2014	15:00	Cloudy	67.0	68.5	64.5	69	67	75
20/5/2014	13:50	Cloudy	65.9	67.5	63.5	69	66	75
26/5/2014	13:00	Fine	66.5	68.0	64.5	69	67	75

Location: M4b - Victoria Centre

Date	Time	Weather	Measurement Noise Level			Baseline Noise Level	Construction Noise Level	Limit Level
			Leq	L10	L90	Leq	Leq	Leq
Unit: dB(A), (30min)								
29/4/2014	14:50	Cloudy	67.8	69.5	65.5	67	58	75
7/5/2014	13:15	Fine	69.5	71.0	67.0	67	65	75
14/5/2014	13:40	Cloudy	69.7	71.0	67.5	67	66	75
20/5/2014	14:35	Cloudy	68.7	69.5	67.0	67	63	75
26/5/2014	11:14	Fine	69.7	71.0	67.5	67	66	75

Location: M5b - City Garden

Date	Time	Weather	Measurement Noise Level			Baseline Level	Construction Noise Level	Limit Level
			Leq	L10	L90	Leq	Leq	Leq
Unit: dB(A), (30min)								
29/4/2014	15:35	Cloudy	70.5	71.0	69.0	68	67	75
7/5/2014	14:15	Fine	67.4	68.5	65.5	68	67	75
12/5/2014	15:07	Fine	70.2	71.6	69.0	68	66	75
22/5/2014	10:50	Cloudy	72.7	73.0	71.5	68	71	75
26/5/2014	9:44	Fine	70.2	71.5	68.0	68	66	75

Location: M6 - HK Baptist Church Henrietta Secondary School

Date	Time	Weather	Measurement Noise Level			Baseline Level	Construction Noise Level	Limit Level
			Leq	L10	L90	Leq	Leq	Leq
Unit: dB(A), (30-min)								
29/4/2014	16:20	Cloudy	73.5	74.5	71.5	71	70	70
7/5/2014	15:11	Fine	74.8	76.0	73.0	71	73	70
14/5/2014	16:30	Fine	73.8	75.0	72.0	71	71	70
22/5/2014	10:05	Cloudy	73.0	74.0	71.5	71	69	70
26/5/2014	10:18	Fine	71.8	73.5	69.0	71	65	70



Noise Monitoring Result

Day Time (0700 - 1900hrs on normal weekdays)

Location: M7e - International Finance Centre (Eastern End of Podium) (Reference Station)

Date	Time	Weather	Measurement Noise Level			Baseline Level	Construction Noise Level	Limit Level
			Leq	L10	L90	Leq	Leq	Leq
Unit: dB(A), (30-min)								
29/4/2014	09:49	Sunny	66.3	68.5	62.0	67	66	N/A
8/5/2014	09:24	Fine	67.1	68.5	64.0	67	55	N/A
14/5/2014	15:09	Cloduy	66.6	68.5	61.0	67	67	N/A
20/5/2014	09:53	Sunny	65.2	67.0	62.0	67	65	N/A
26/5/2014	16:25	Fine	65.2	66.5	62.5	67	65	N/A

Location: M7w - International Finance Centre (Western End of Podium)

Date	Time	Weather	Measurement Noise Level			Baseline Level	Construction Noise Level	Limit Level
			Leq	L10	L90	Leq	Leq	Leq
Unit: dB(A), (30-min)								
29/4/2014	08:35	Sunny	66.5	66.6	63.0	69	67	75
8/5/2014	10:05	Fine	65.2	66.5	63.0	69	65	75
14/5/2014	10:29	Cloudy	64.1	65.5	62.0	69	64	75
20/5/2014	09:20	Sunny	64.8	66.0	62.5	69	65	75
26/5/2014	15:50	Fine	63.7	65.0	61.5	69	64	75

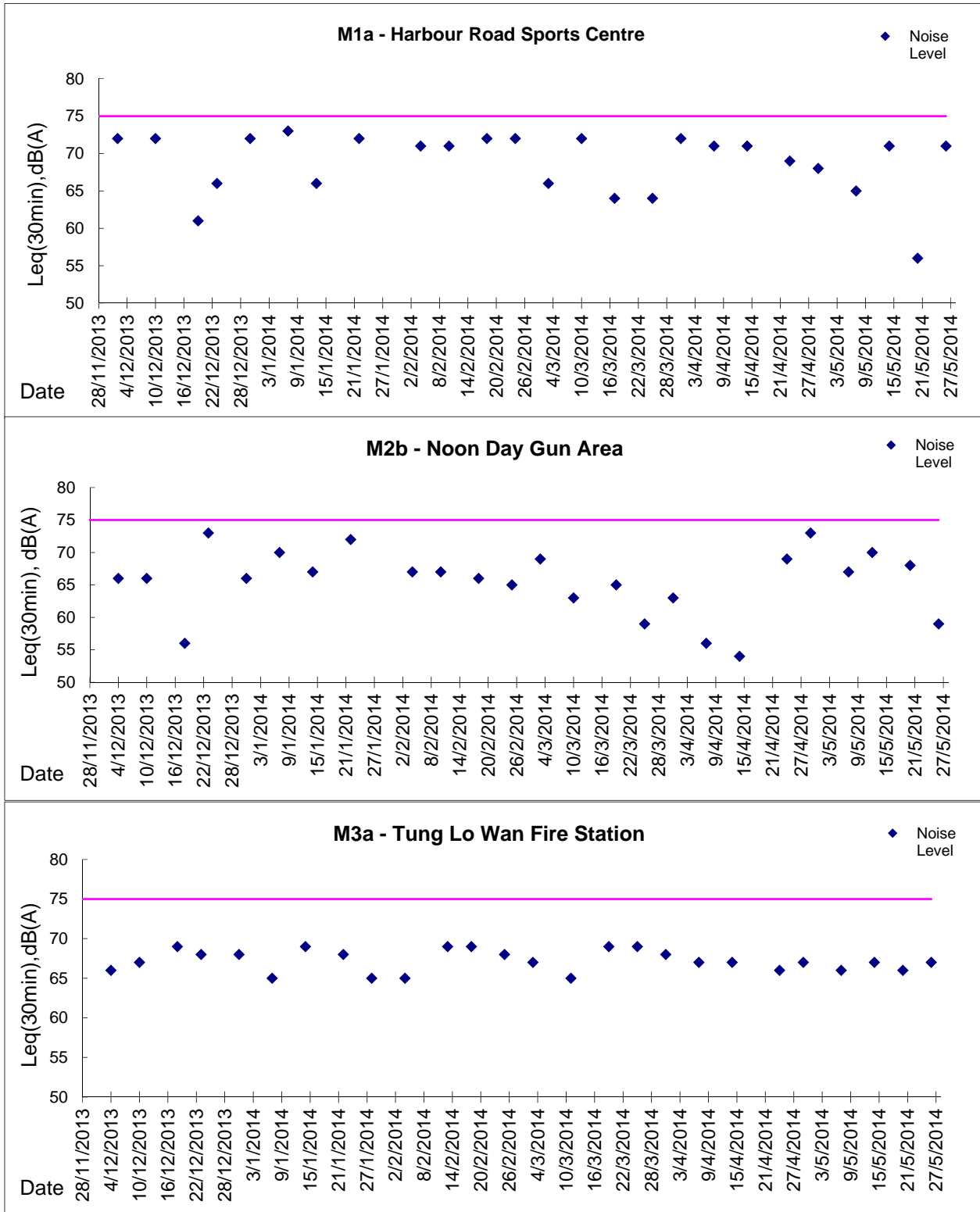
Location: M8 - City Hall

Date	Time	Weather	Measurement Noise Level			Baseline Level	Construction Noise Level	Limit Level
			Leq	L10	L90	Leq	Leq	Leq
Unit: dB(A), (30-min)								
28/4/2014	15:37	Sunny	61.8	62.0	56.0	64	62	70
8/5/2014	11:00	Fine	61.6	64.0	57.5	64	62	70
14/5/2014	13:30	Clody	61.0	63.0	55.5	64	61	70
20/5/2014	08:35	Sunny	59.2	61.0	55.5	64	59	70
26/5/2014	17:10	Fine	58.8	60.0	57.0	64	59	70



Graphic Presentation of Noise Monitoring Result

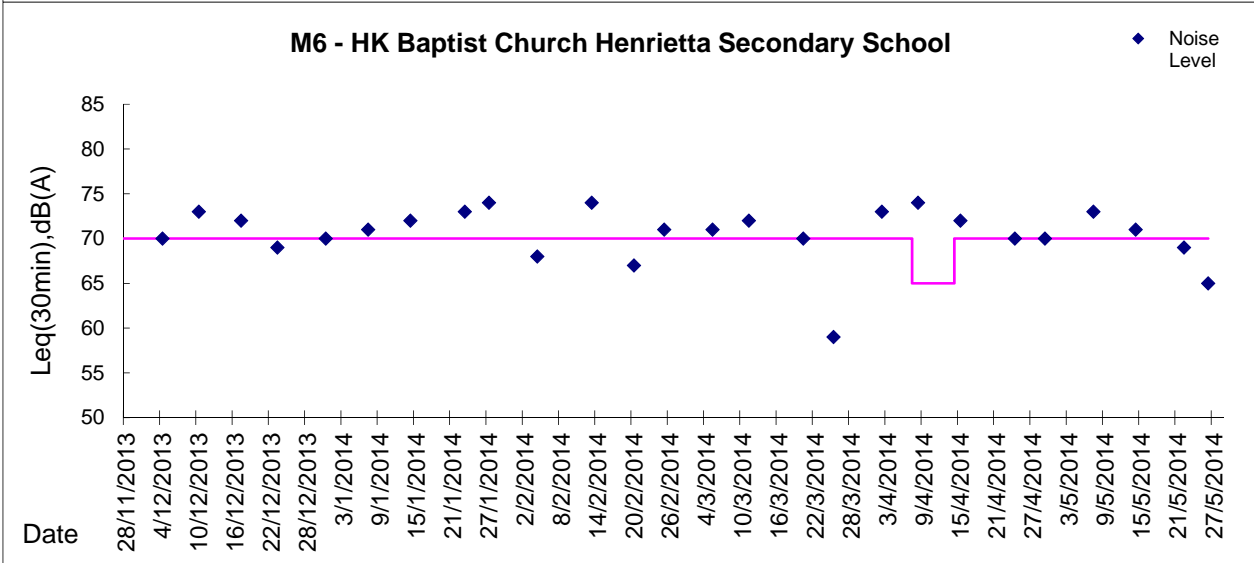
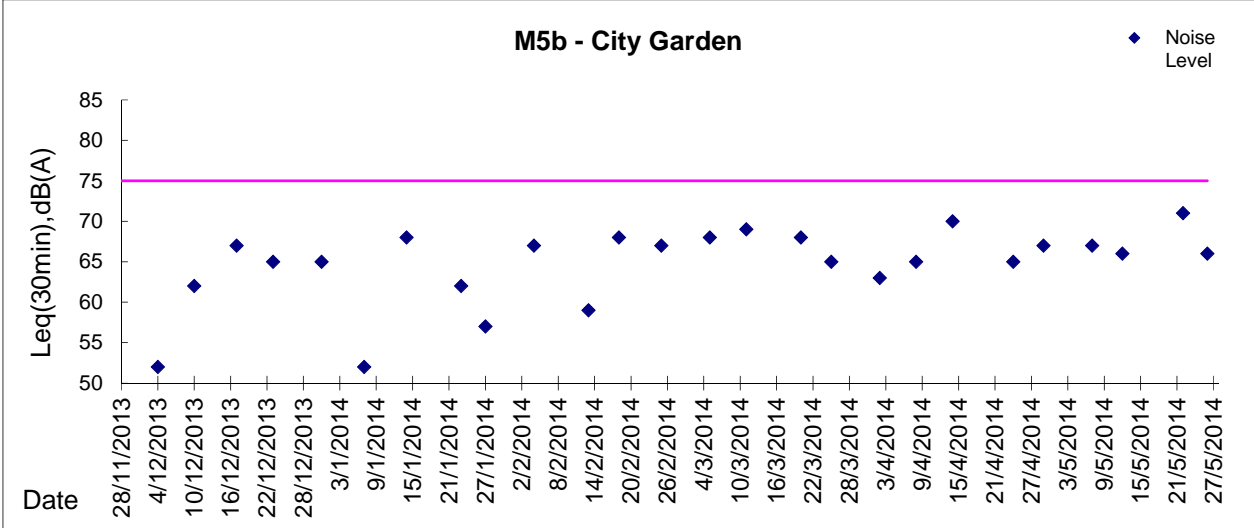
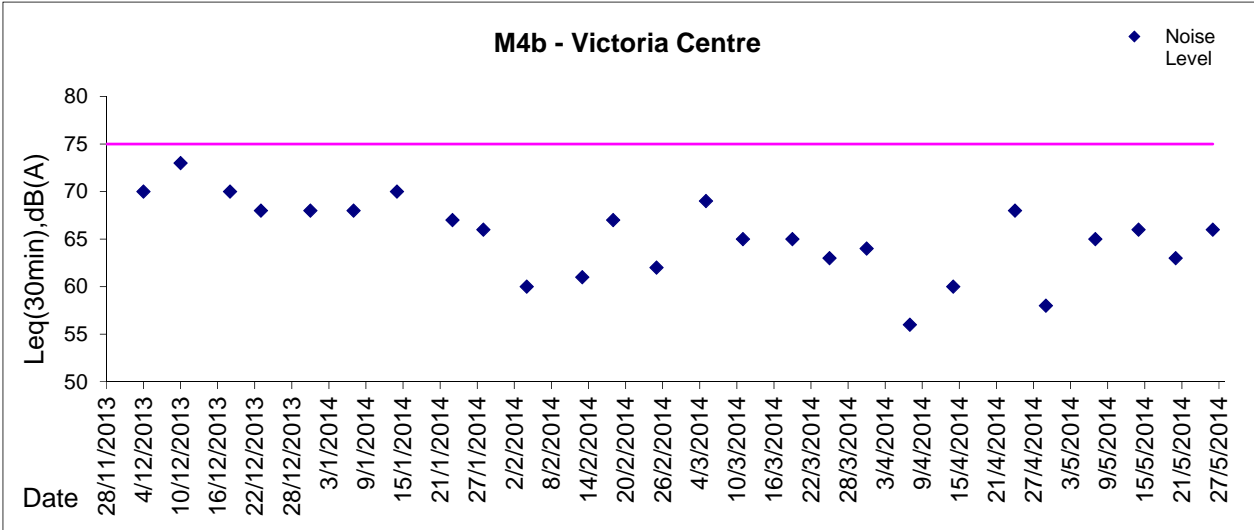
Day Time (0700 - 1900hrs on normal weekdays)





Graphic Presentation of Noise Monitoring Result

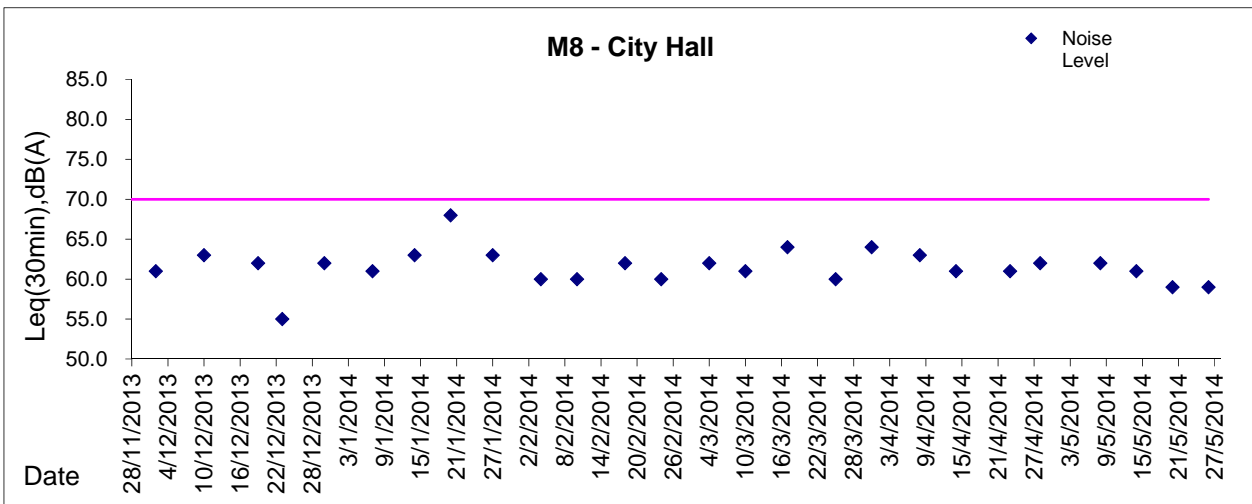
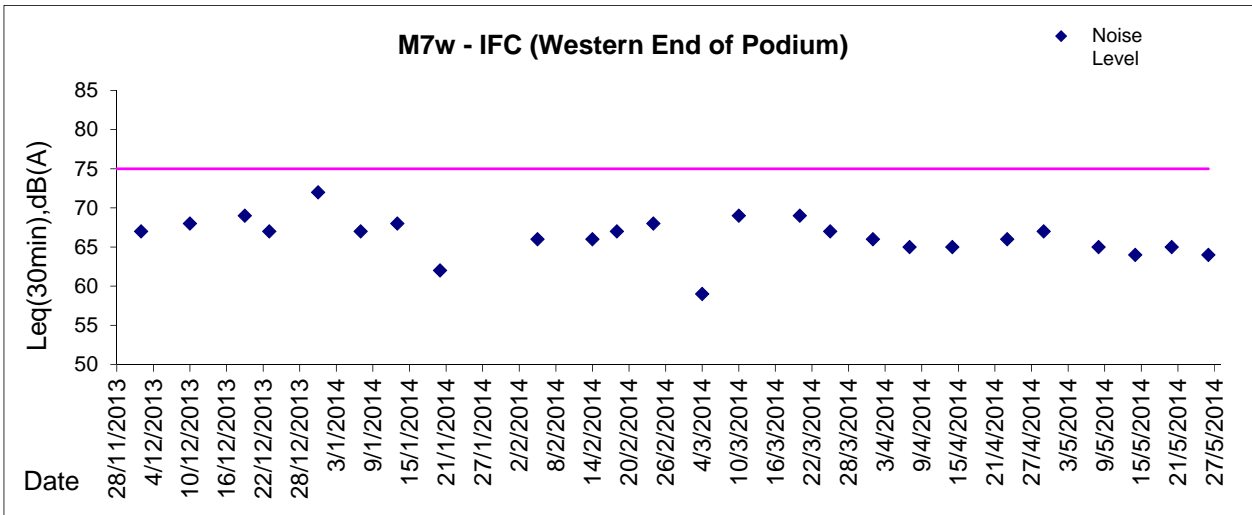
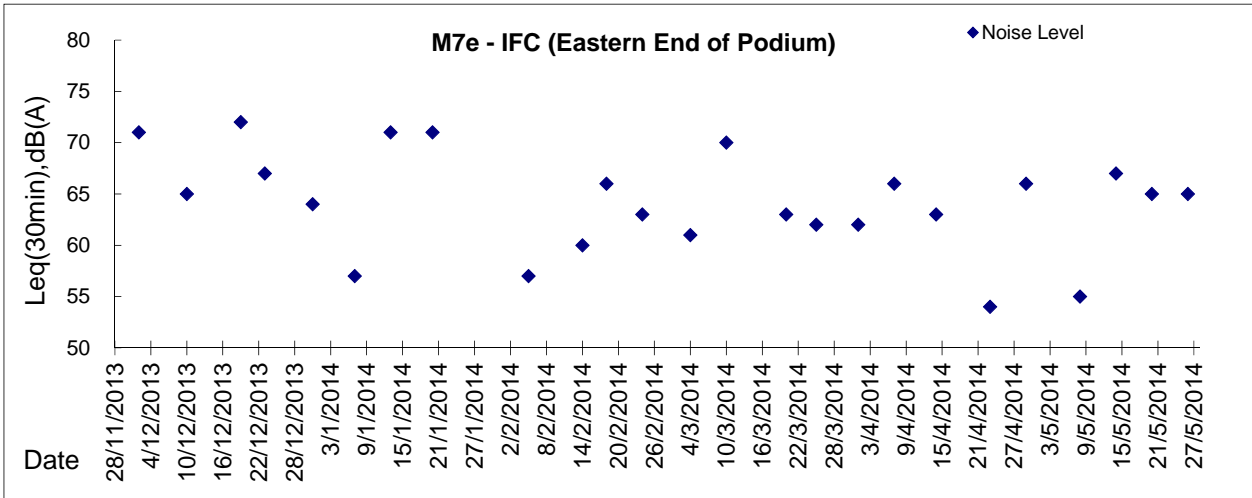
Day Time (0700 - 1900hrs on normal weekdays)





Graphic Presentation of Noise Monitoring Result

Day Time (0700 - 1900hrs on normal weekdays)



* Remark: M7e - IFC (Eastern End of Podium) is a reference monitoring station